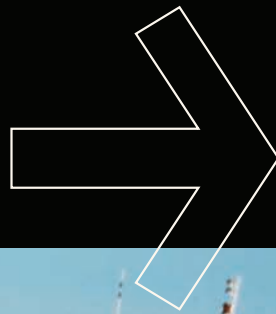


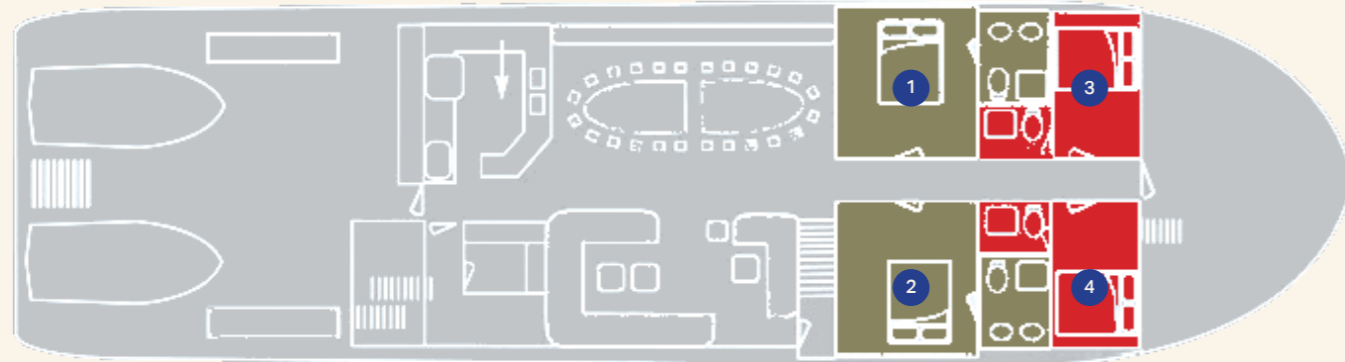
# Aboard The True North II

Deck Plans & Cabins



# Explorer Class Staterooms

2 CABINS IN TOTAL - ALL LOCATED ON THE MAIN DECK



## Main Deck

EXPLORER CLASS

- 1 Dirk Hartog
- 2 Abel Tasman

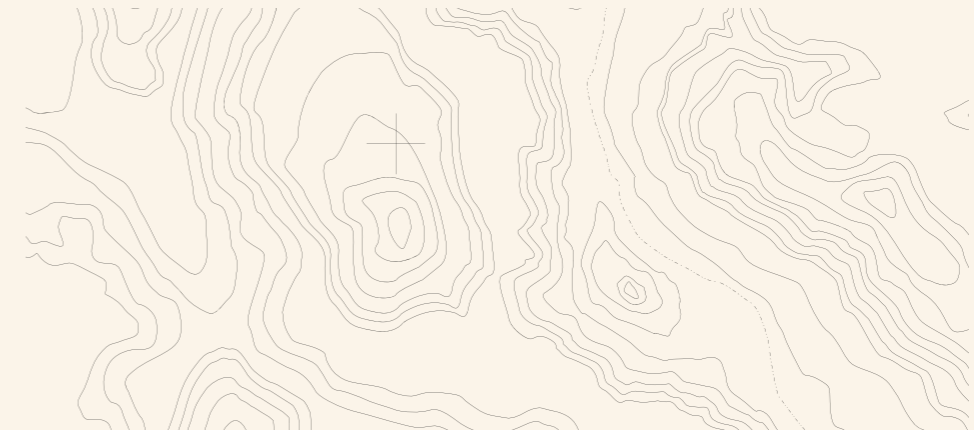
RIVER CLASS

- 3 Pentecost
- 4 Ord

Located on the main deck – Explorer Class staterooms feature a free standing queen size bed and a twin basin en-suite. Cabin size is 12 square metres (129 square feet). Other features include large panoramic windows, in-cabin entertainment and desk space.

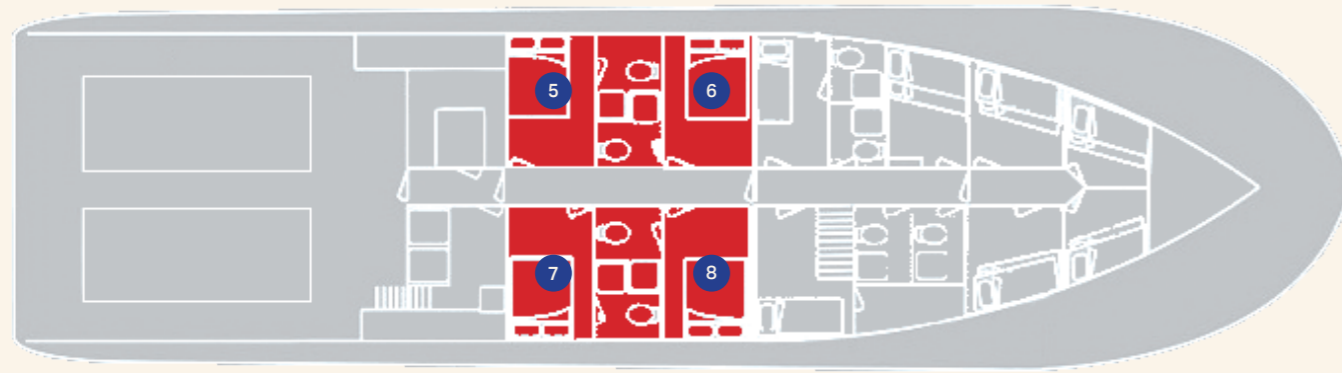
### FEATURES

- Approximate dimensions 3.4m X 3.4m
- Queen size bed
- Large viewing windows (3)
- Spacious ensuite featuring twin basins
- Original artwork in the cabin
- Plenty of storage for clothing and other personal items
- Writing desk and chair
- Wall-mounted TV
- Personal air conditioning unit



# River Class Cabins

6 CABINS IN TOTAL  
- 2 LOCATED ON THE MAIN DECK WITH 4 ON THE LOWER DECK



## Lower Deck

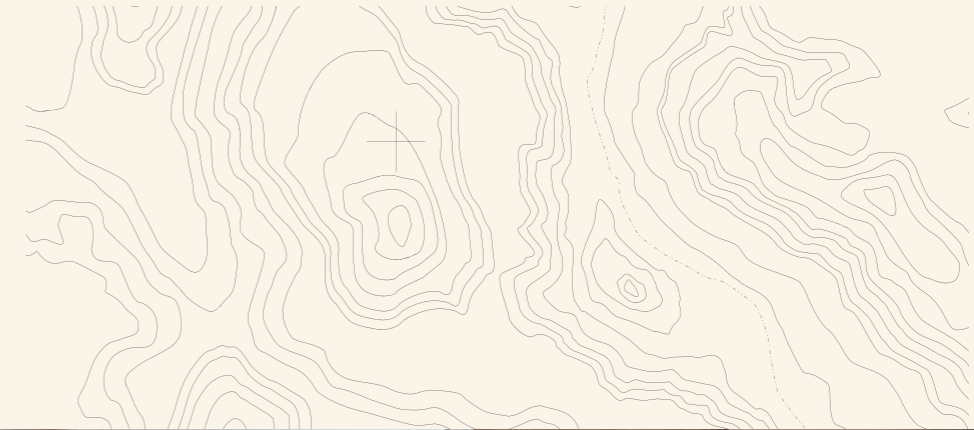
RIVER CLASS

- 5 Roe
- 6 Sale
- 7 Charnley
- 8 Glenelg

Located on the main and lower decks – River Class cabins feature a queen size double and en-suite. Cabin size is 7 square metres (75 square feet). Other features include a large panoramic window or two port holes, in-cabin entertainment and option for pullman.

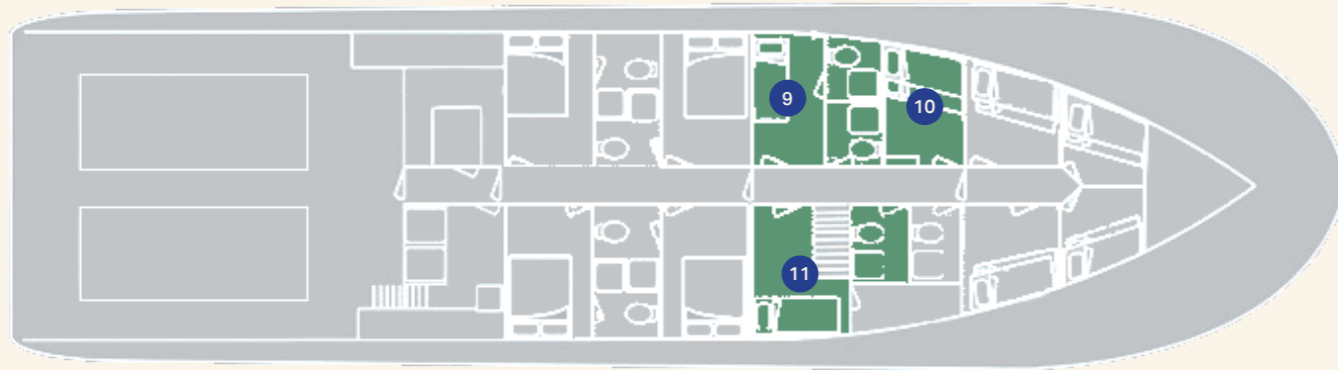
### FEATURES

- Approximate dimensions 3.1m X 2.1m
- Queen size bed
- Large viewing window or large porthole
- Spacious ensuite
- Plenty of storage for clothing and other personal items
- Wall-mounted TV
- Personal air conditioning unit



# Ocean Class Cabins

3 CABINS IN TOTAL - ALL LOCATED ON THE LOWER DECK



## Lower Deck

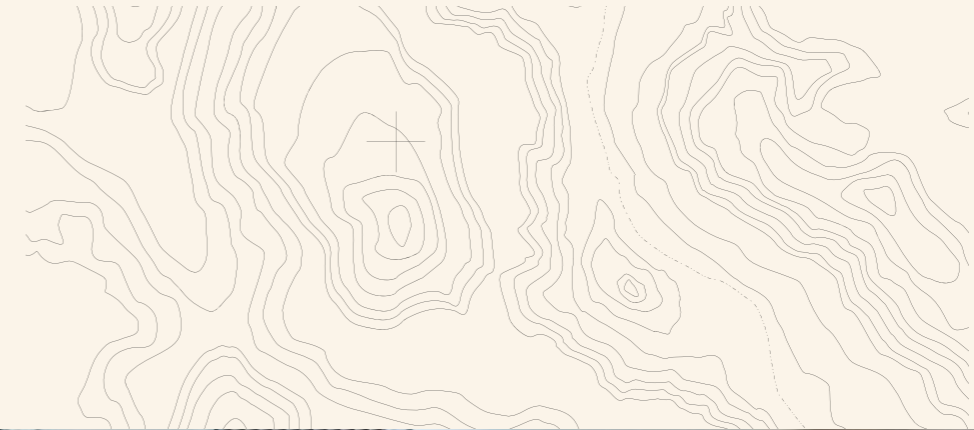
OCEAN CLASS

- 9 Montebello Is
- 10 Rowley Shoals
- 11 Abrolhos Is

Located on the lower deck – Ocean Class cabins features roomy bunk configured singles and en-suite or private bathroom. Cabin size is approximately 5.6 square metres (60 square feet). Other features include a large porthole.

### FEATURES

- Approximate dimensions average 2.7 X 2m
- Roomy twin single bunkbeds
- Spacious ensuite or private bathroom
- Large porthole allow plenty of natural light
- Drawers and closet space to store clothing and other personal items
- Personal air conditioning unit



# True North II Specification

<b>Commissioned</b>	February 1999
<b>Refit</b>	March 2023
<b>Port of Registry</b>	Fremantle
<b>Configuration</b>	Mono-hull adventure cruise ship
<b>Length</b>	35 metres
<b>Tonnage</b>	281 tonnes
<b>Draught</b>	2.25 metres
<b>Beam</b>	9.11 metres
<b>Crew</b>	14
<b>Passengers</b>	22
<b>Propulsion</b>	2 x MTU 16 cylinder 4 cycle turbocharged diesel engines
<b>Auxiliary</b>	2 x Perkins 6TG24M/Stamford 112.5 kVA Generators
<b>Cruising Speed</b>	12-14 knots
<b>Fuel</b>	24,428 lts diesel/6,000 lts Jet A1/1,960 lts ULP
<b>Water Making Capability</b>	3 x 2.2 kW reverse osmosis freshwater generation system
<b>Motion Control</b>	Computer controlled stabilizers
<b>Safety</b>	Full compliance under the AMSA and IMO standard
<b>Cabin Power</b>	240V
<b>Day Areas</b>	Sun deck, combined dining saloon/lounge, alfresco bar
<b>Helicopter</b>	Eurocopter AS350 Squirrel
<b>Adventure Boats</b>	5





True North  
+61 8 9192 1829  
[experiences@truenorth.com.au](mailto:experiences@truenorth.com.au)  
[www.truenorth.com.au](http://www.truenorth.com.au)