



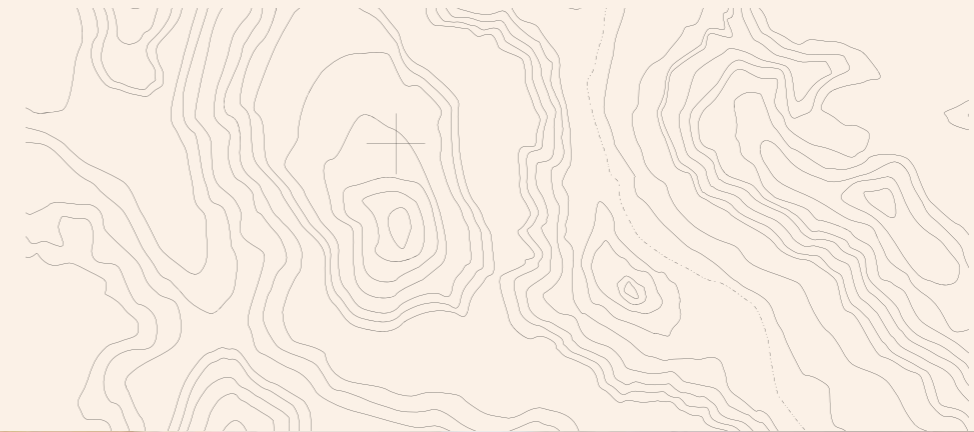
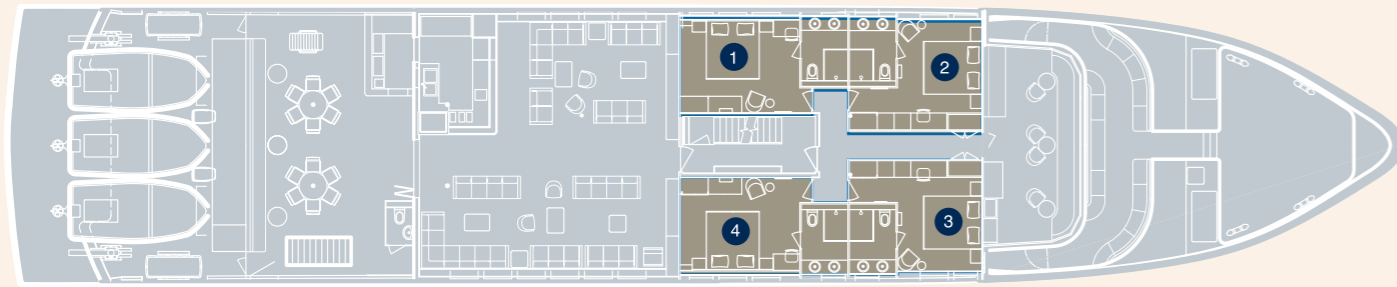
# Aboard The True North

Deck Plans & Cabins



# Explorer Class Staterooms

4 CABINS IN TOTAL - ALL LOCATED ON THE UPPER DECK



## Upper Deck

EXPLORER CLASS

- 1 Bradshaw
- 2 Dampier
- 3 Durack
- 4 Parker King

Located on the upper deck – Explorer Class staterooms feature a king size beds (that can be converted to singles) and a twin basin en-suite. Cabin size is 18 square metres (193 square feet). Other features include large panoramic windows, amenities fridge, in-cabin entertainment and satellite telephone.

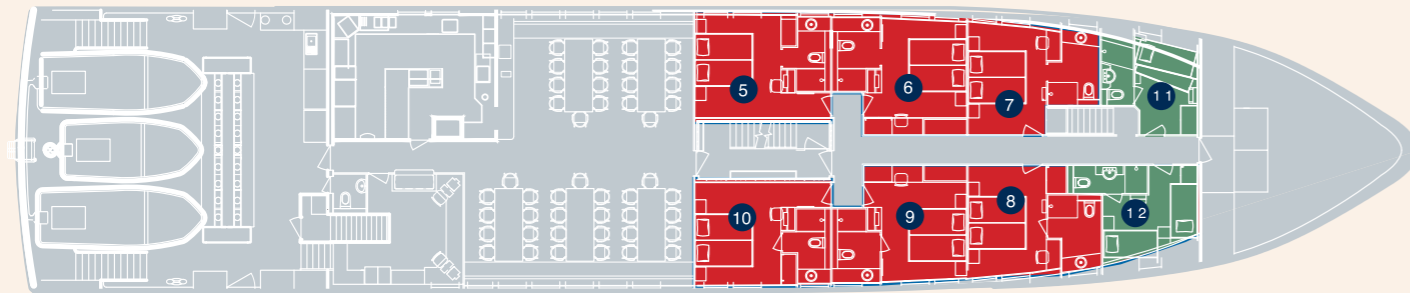
### FEATURES

- Approximate dimensions 3m X 4m (Ensuite 2m X 1.75m)
- King size beds (can be split into singles if requested)
- Large panoramic windows
- Spacious ensuite featuring twin basins and panoramic windows
- Original artwork in the cabin
- Plenty of storage for clothing and other personal items
- Amenities fridge
- Writing desk and chair
- Wall-mounted TV and DVD player
- Personal aircon unit
- Satellite phone



# River Class Staterooms

6 CABINS IN TOTAL - ALL LOCATED ON THE MAIN DECK



## Main Deck

### RIVER CLASS

- 5 Prince Regent River
- 6 Mitchell River
- 7 Berkeley River
- 8 Drysdale River
- 9 Hunter River
- 10 King George River

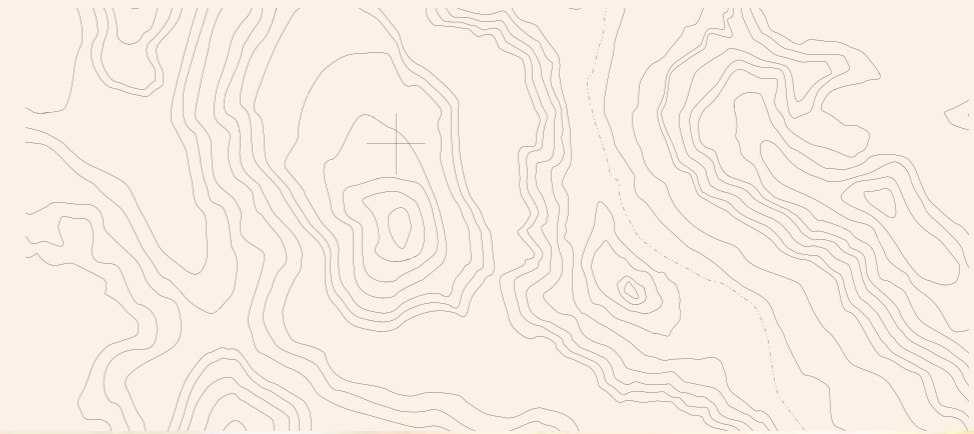
### OCEAN CLASS

- 11 Camden Harbour
- 12 Lacepede Islands

Located on the main deck – River Class staterooms feature a king size beds (that can be converted to singles) and en-suite. Cabin size is similar to Explorer Class. Other features include large panoramic windows, in-cabin entertainment and satellite telephone.

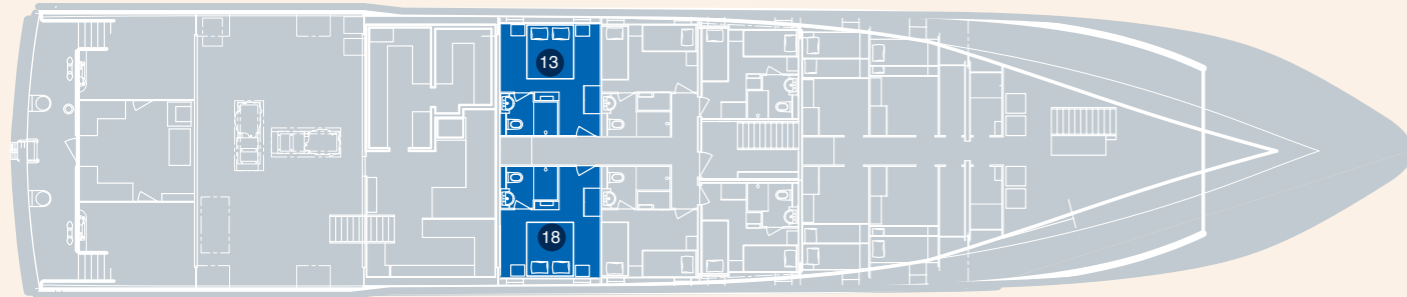
#### FEATURES

- Approximate dimensions 3.5m X 3.5m (Ensuite 2m X 1.75m)
- King size bed (can be split into singles if requested)
- Spacious ensuite with panoramic windows
- Large panoramic windows
- Plenty of storage for clothing and other personal items
- Wall-mounted TV
- Personal air conditioning unit
- Satellite phone



# Ocean Premium Cabins

2 CABINS IN TOTAL  
- LOCATED ON THE LOWER DECK



## Lower Deck

OCEAN PREMIUM

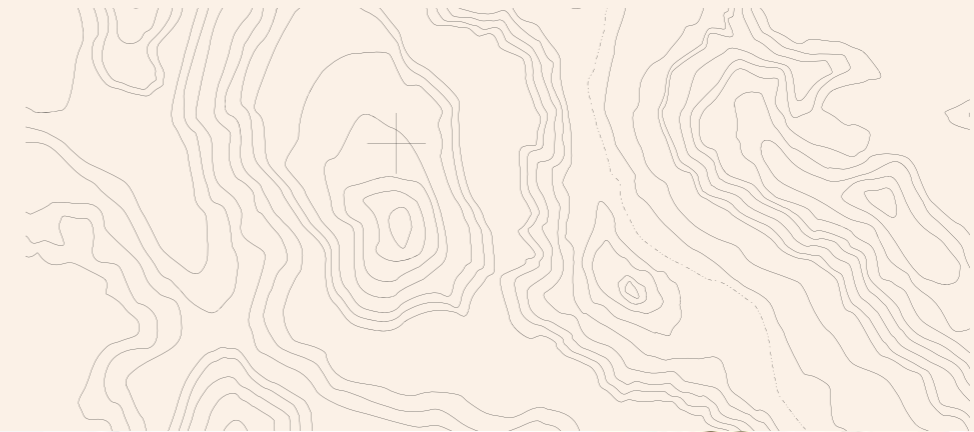
13 Koolama Bay

18 Atlantis Bay

Located on the lower deck – Ocean Premium doubles feature a king size bed and en-suite. Cabin size is approximately 14 square metres (150 square feet). Other features include 2 portholes, in-cabin entertainment and satellite telephone.

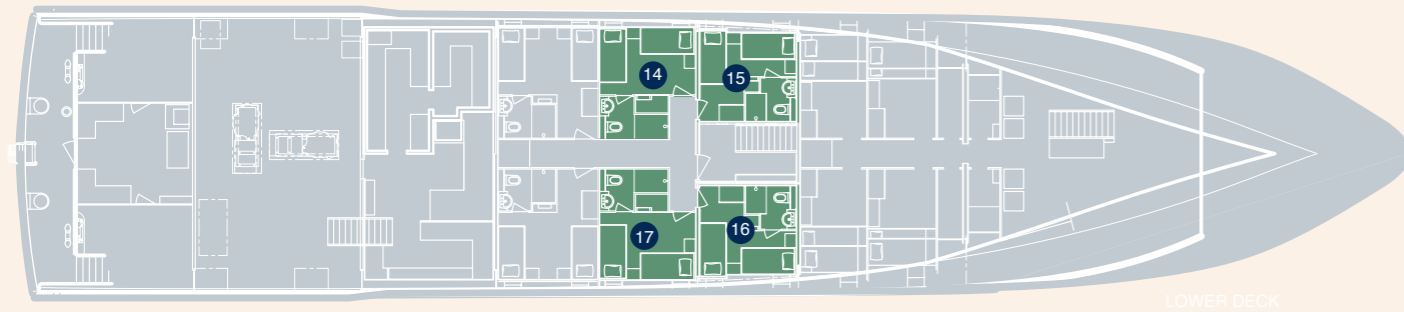
### FEATURES

- Approximate dimensions 3.5m X 3m (Ensuite 1.5m X 1.75m)
- King size bed (can be converted to singles)
- Spacious ensuite
- Large portholes allow plenty of natural light
- Plenty of storage for clothing and other personal items
- Wall-mounted TV
- Personal air conditioning unit
- Satellite phone



# Ocean Class Cabins

6 CABINS IN TOTAL  
- 4 LOCATED ON THE LOWER DECK WITH 2 ON THE MAIN DECK



## Lower Deck

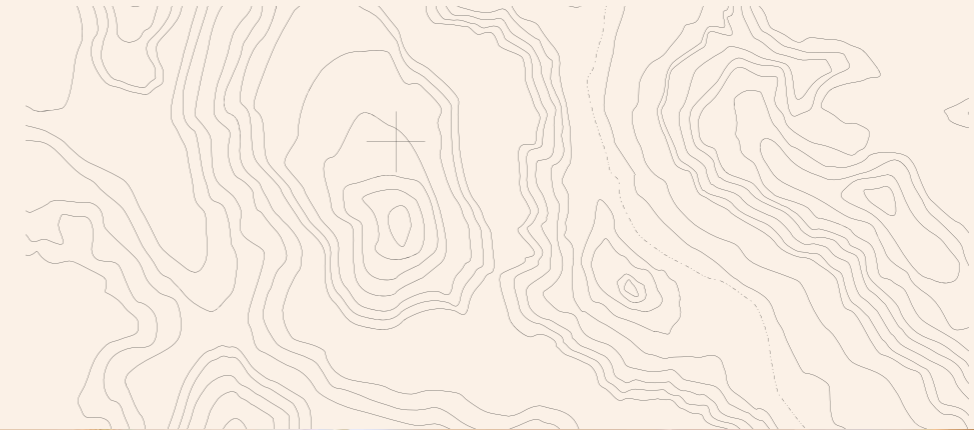
OCEAN CLASS

- 14 Montgomery Reef
- 15 Jackson Falls
- 16 King Cascade
- 17 Imperieuse Reef

Located on the lower deck – Ocean Class twins feature roomy singles and en-suite. Cabin size is approximately 12 square metres (129 square feet). Other features include 2 portholes, in-cabin entertainment and satellite telephone.

### FEATURES

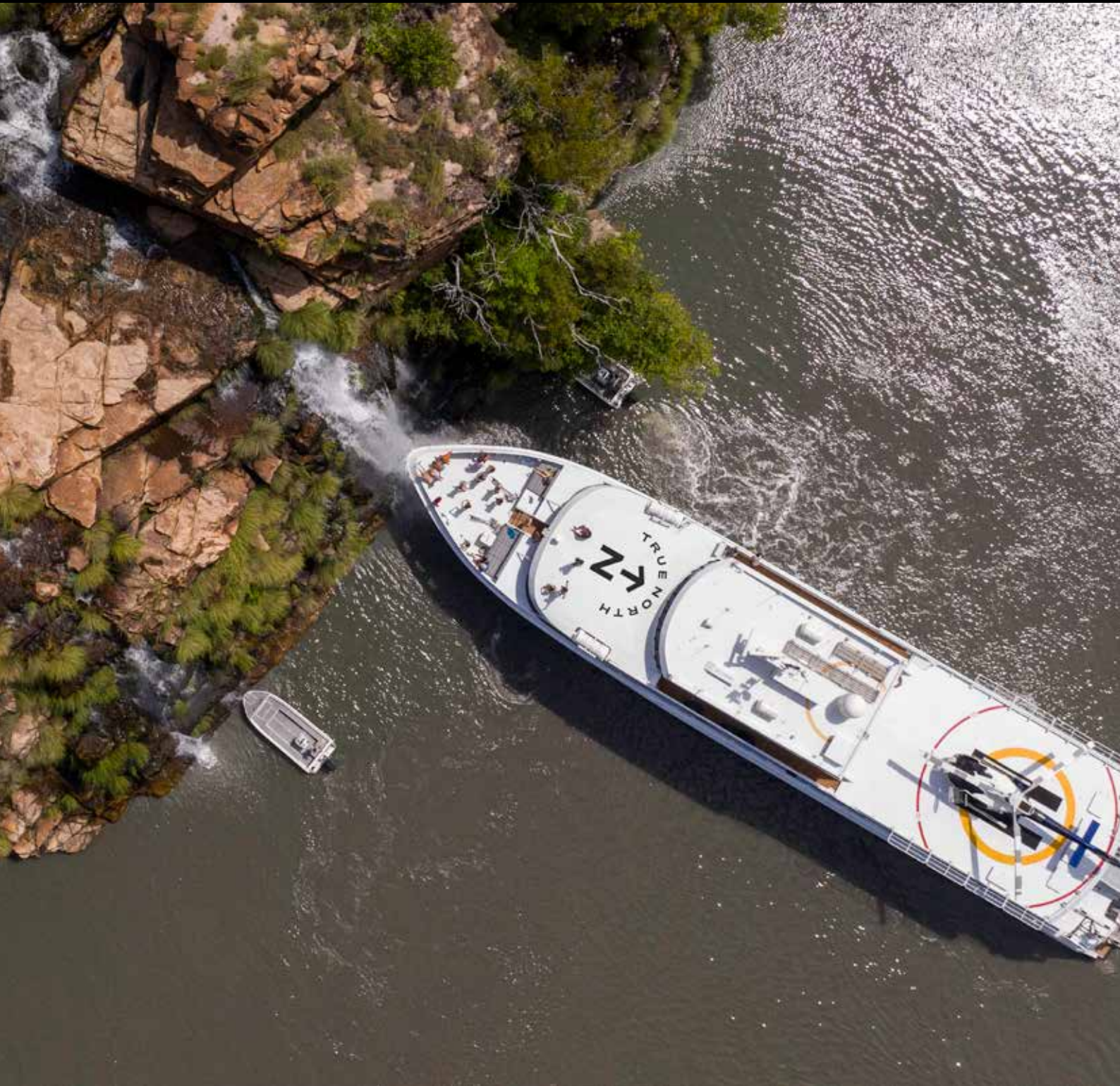
- Approximate dimensions 2.5 to 3m X 3m (Ensuite 1.5m X 1.75m)
- Roomy twin configured single beds
- Spacious ensuite
- Large portholes allow plenty of natural light
- Drawers and closet space to store clothing and other personal items
- Wall-mounted TV
- Personal air conditioning unit
- Satellite phone



# True North Specification

|                              |  |
|------------------------------|--|
| <b>Commissioned</b>          | February 2005  |
| <b>Flag</b>                  | Australian   |
| <b>Configuration</b>         | Mono-hull adventure cruise ship  |
| <b>Length</b>                | 50 metres  |
| <b>Tonnage</b>               | 776 tonnes   |
| <b>Draught</b>               | 2.4 metres   |
| <b>Beam</b>                  | 10 metres  |
| <b>Crew</b>                  | 22   |
| <b>Passengers</b>            | 36   |
| <b>Propulsion</b>            | 2 x 783 kW   |
| <b>Bow Thruster</b>          | 110 kW   |
| <b>Auxiliary</b>             | 2 x 189 kW   |
| <b>Cruising Speed</b>        | 14 knots   |
| <b>Range</b>                 | 2,000 miles  |
| <b>Fuel</b>                  | 40,000 lts diesel/9,000 lts Jet A1/3,000 lts ULP                                       |
| <b>Water Making Capacity</b> | 1,500 lts per hour   |
| <b>Motion Control</b>        | Computer controlled stabilizers  |
| <b>Safety</b>                | Full compliance under the AMSA and IMO standard  |
| <b>Cabin Features</b>        | En-suite, in-cabin entertainment and satellite telephone                               |
| <b>Cabin Power</b>           | 240V   |
| <b>Day Areas</b>             | Sun deck, observation lounge, ship's lounge, alfresco bar, sports deck and dining room |
| <b>Helicopter</b>            | Eurocopter (6 pax all facing forward/air conditioned)                                  |
| <b>Adventure Boats</b>       | 6  |





True North  
+61 8 9192 1829  
experiences@truenorth.com.au  
www.truenorth.com.au